



OPTIONAL A
1450-1



OPTIONAL B
1450-1



OPTIONAL D
1450-1



OPTIONAL C
1450-1



OPTIONAL A
1450-1



OPTIONAL B
1450-1



OPTIONAL D
1450-1



OPTIONAL C
1450-1

© 2011
COPYRIGHT
HOUSE PLANS BY
BONNIE, INC.
These drawings are not to
be construed as advice in
any form or manner whatsoever,
without the express permission of
HOUSE PLANS BY BONNIE, INC.

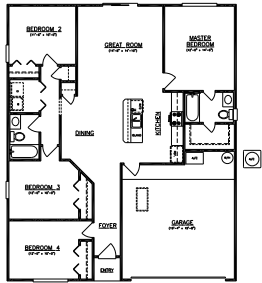
HOUSE PLANS BY BONNIE, INC.
is not responsible for the
accuracy of the information
contained in these drawings,
nor for any construction,
alterations, or other building
work.

HOUSE PLANS by BONNIE inc.
4745 SWEET CHERRY LANE EAST JACKSONVILLE, FLORIDA 32225
(904) 264-1262

KENNY GREENE

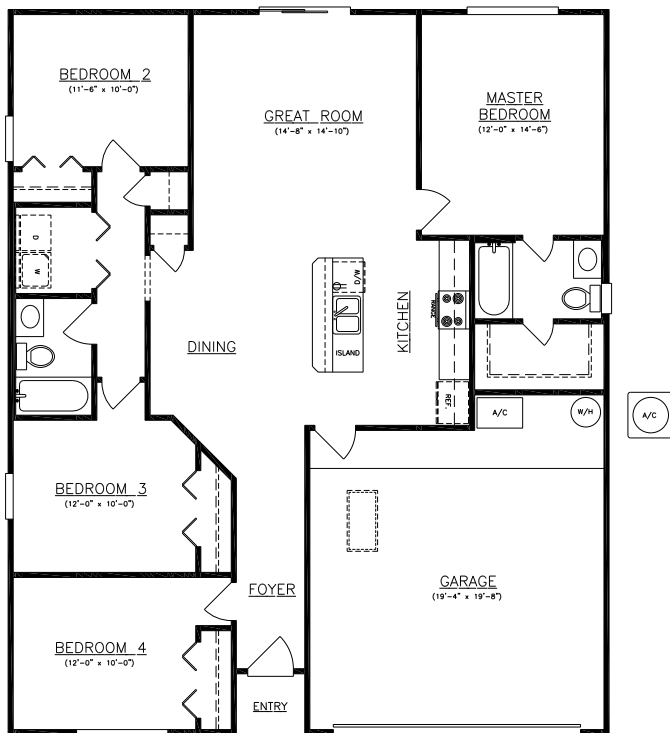
PLAN # 1450-1

DRAWN BY	
DATE	11-02-12
SCALE	1/4"=1'-0"
CHECKED BY	B.M.S.
PLAN NO	
SHEET NO	1 OF 1



SQUARE FOOTAGE TABULATION	
LAND	1500
TOTAL ENCLOSED	1883
TOTAL COVERED	1883

1450-1



SQUARE FOOTAGE TABULATION

LIVING	1450
GARAGE	415
TOTAL ENCLOSED	1865
ENTRY	18
TOTAL COVERED	1883

1450-1

© 2011
 BONNIE
 HOUSE PLANS BY
 BONNIE, INC.
 These drawings are not to
 be construed as contract &
 are form or minor alterations
 without the written permission of
 HOUSE PLANS BY BONNIE, INC.

HOUSE PLANS BY BONNIE, INC.
 represents the design of the
 architectural drawings shown here
 and does not represent the
 construction of the building.
 The contractor is responsible for
 obtaining all necessary
 permits and for meeting all
 applicable codes and regulations.

HOUSE PLANS by BONNIE inc.
 4745 SWEET CHERRY LANE EAST JACKSONVILLE, FLORIDA 32225
 (904) 264-1262

KENNY GREENE

PLAN # 1450-1

DRAWN BY	
DATE	11-02-12
SCALE	1/4"=1'-0"
CHECKED BY	B.M.S.
PLAN NO	
SHEET NO	1 OF 1