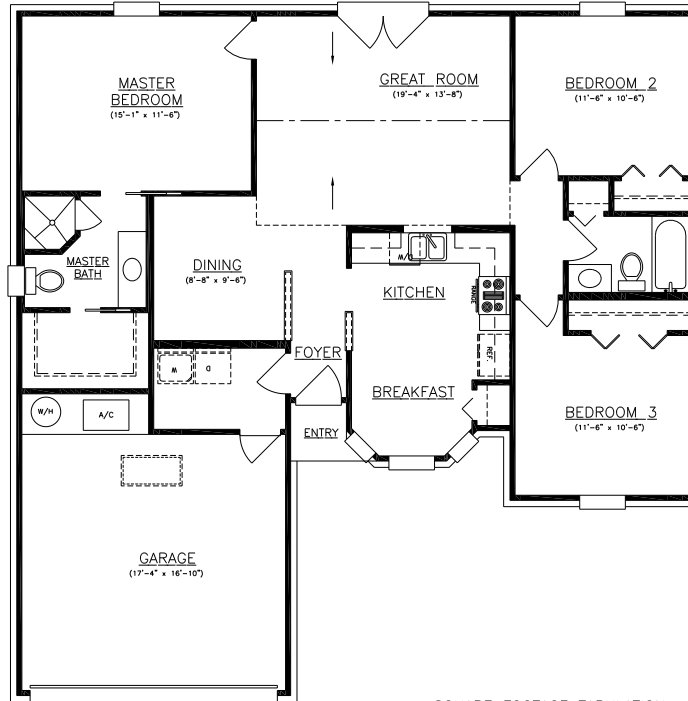


SQUARE FOOTAGE TABULATION	
LIVING	1273
GARAGE	332
TOTAL ENCLOSED	1605
ENTRY	16
TOTAL COVERED	1621

1273-1



SQUARE FOOTAGE TABULATION	
LIVING	1273
GARAGE	332
TOTAL ENCLOSED	1605
ENTRY	16
TOTAL COVERED	1621

1273-1

© 2011
 BONNIE
 HOUSE PLANS BY
 BONNIE, INC.
 These drawings are not to
 be construed as a contract
 in any form or manner whatsoever
 without the written permission of
 HOUSE PLANS BY BONNIE, INC.

HOUSE PLANS BY BONNIE, INC.
 represents the design of the
 structure shown on these plans.
 It is the responsibility of the contractor
 to verify all dimensions, conditions,
 and materials with the local building
 department and with the local utility
 companies.

HOUSE PLANS by BONNIE inc.
 4745 SWEET CHERRY LANE EAST JACKSONVILLE, FLORIDA 32225
 (904) 264-1262

KENNY GREENE

PLAN # 1273-1

DRAWN BY	
DATE	11-02-12
SCALE	1/4"=1'-0"
CHECKED BY	B.M.S.
PLAN NO	
SHEET NO	1 OF 1



1273-1



1273-1

© 2011
 BONNIE PLANS BY
 BONNIE INC.
 These drawings are not to
 be construed as a contract.
 All work shall be in accordance
 with the applicable provisions of
 the Florida Building Code.

HOUSE PLANS BY BONNIE, INC.
 4745 SWEET CHERRY LANE EAST
 JACKSONVILLE, FLORIDA 32225
 (904) 264-1262

HOUSE PLANS BY BONNIE inc.
 4745 SWEET CHERRY LANE EAST JACKSONVILLE, FLORIDA 32225
 (904) 264-1262

PLAN # 1273-1

KENNY GREENE

DRAWN BY	
DATE	11-02-12
SCALE	1/4"=1'-0"
CHECKED BY	B.M.S.
PLAN NO	
SHEET NO	1 OF 1