



1857-1



1857-1

PLAN # 1857-1

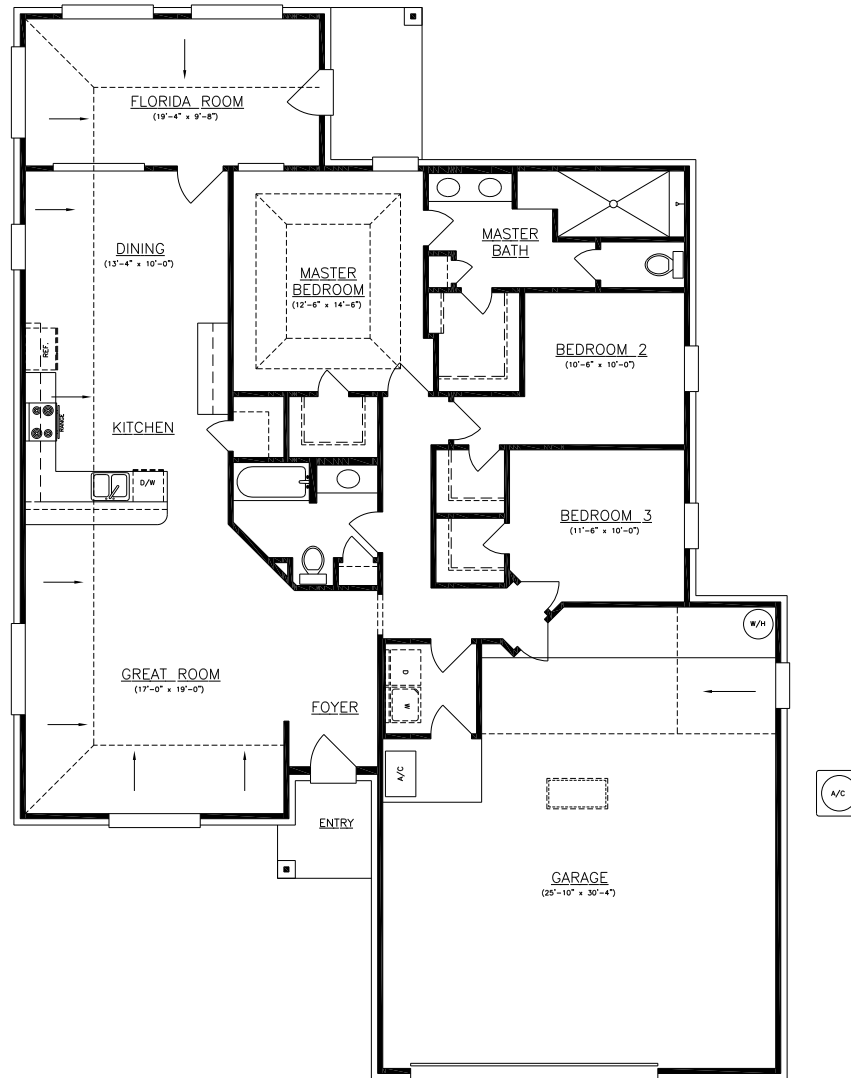
KENNY GREENE

DRAWN BY	
DATE	11-02-12
SCALE	1/4"=1'-0"
CHECKED BY	B.M.S.
PLAN NO	
SHEET NO	1 OF 1

HOUSE PLANS by BONNIE inc.
 4745 SWEET CHERRY LANE EAST JACKSONVILLE, FLORIDA 32225
 (904) 264-1262

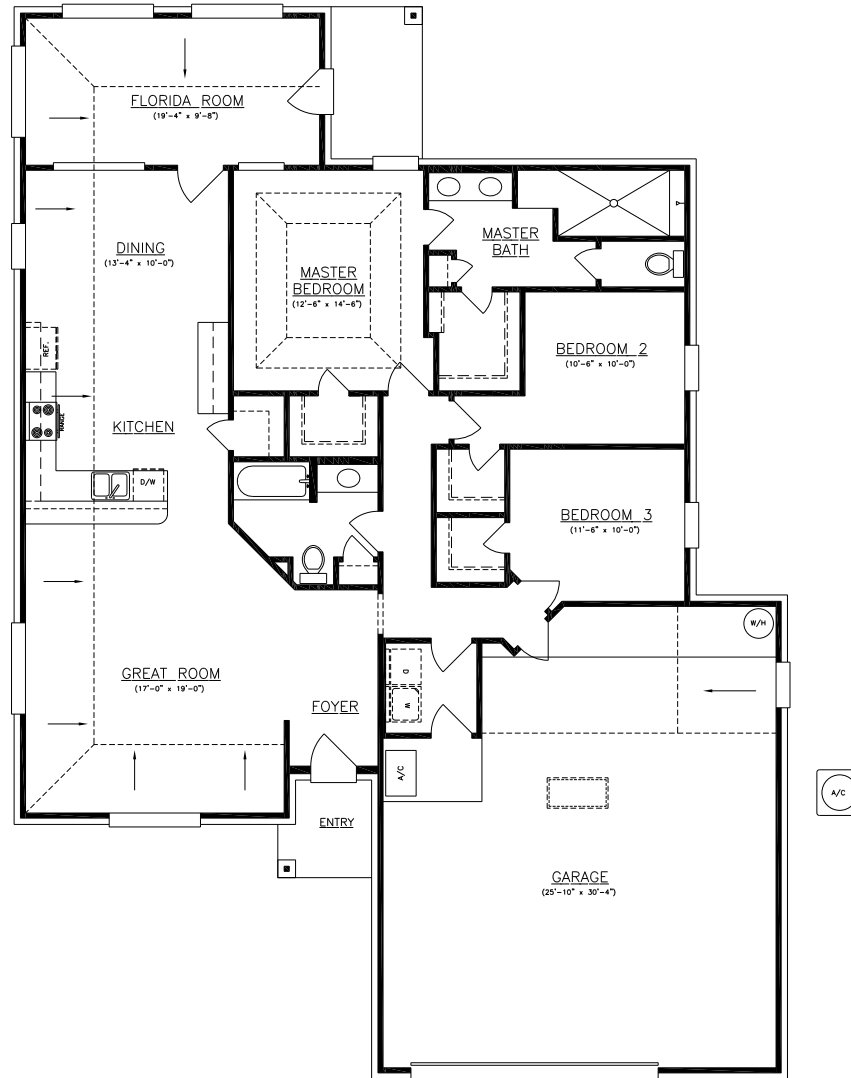
HOUSE PLANS by BONNIE inc.
 These drawings are not to be construed as a contract. The contractor is responsible for providing all construction details and for obtaining all necessary permits and approvals.

© 2011
 COPYRIGHTED
 HOUSE PLANS BY
 BONNIE inc.
 These drawings are not to be reproduced or copied in any form or manner whatsoever without the written permission of HOUSE PLANS by BONNIE inc.



SQUARE FOOTAGE TABULATION	
LIVING	1857
GARAGE	744
TOTAL ENCLOSED	2601
PORCHES	90
TOTAL COVERED	2691

1857-1



SQUARE FOOTAGE TABULATION

LIVING	1857
GARAGE	744
TOTAL ENCLOSED	2601
PORCHES	90
TOTAL COVERED	2691

1857-1

© 2011
 BONNIE INC.
 HOUSE PLANS BY
 BONNIE, INC.
 These drawings are not to
 be construed as contract &
 are form or minor alterations
 without the written permission of
 BONNIE, INC. BY BONNIE, INC.

HOUSE PLANS BY BONNIE, INC.
 represents the design of the
 structure only. It is not
 intended to be used for
 construction or for any other
 purpose without the consent of
 BONNIE, INC. The contractor
 shall be responsible for obtaining
 all necessary permits and for
 complying with all applicable
 codes.

HOUSE PLANS by BONNIE inc.
 4745 SWEET CHERRY LANE EAST JACKSONVILLE, FLORIDA 32225
 (904) 264-1262

KENNY GREENE

DRAWN BY	
DATE	11-02-12
SCALE	1/4"=1'-0"
CHECKED BY	B.M.S.
PLAN NO.	
SHEET NO.	1 OF 1

PLAN # 1857-1