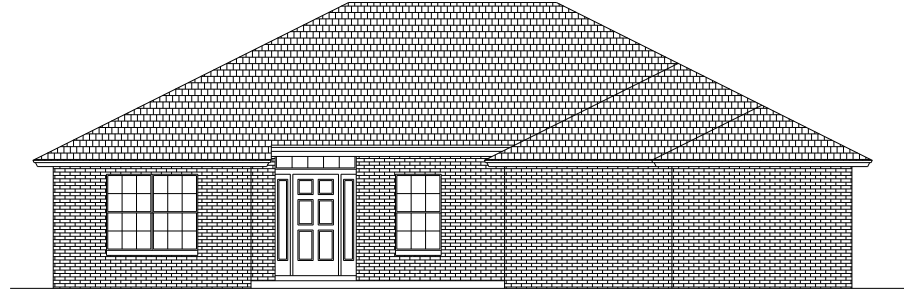


1747-1



1747-1

PLAN # 1747-1

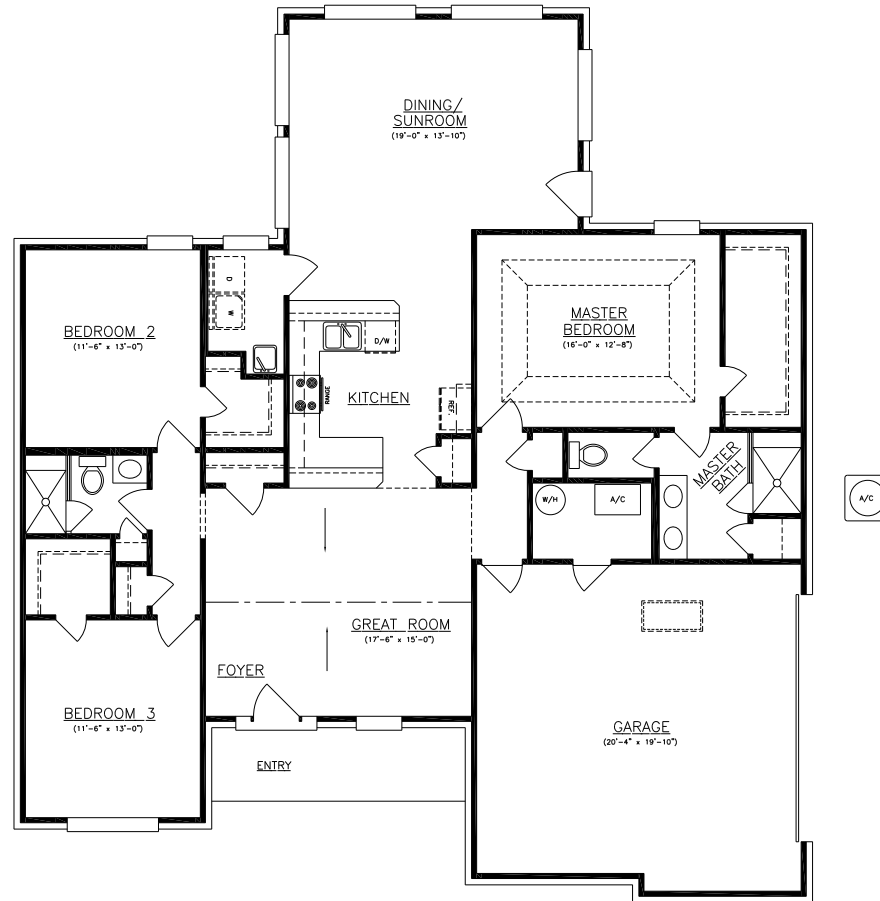
KENNY GREENE

DRAWN BY	
DATE	11-02-12
SCALE	1/4"=1'-0"
CHECKED BY	B.M.S.
PLAN NO	
SHEET NO	1 OF 1

HOUSE PLANS by BONNIE inc.
 4745 SWEET CHERRY LANE EAST JACKSONVILLE, FLORIDA 32225
 (904) 264-1262

HOUSE PLANS by BONNIE inc.
 These drawings are not to be construed as a contract. The purchaser/owner is responsible for providing all construction details and materials. The drawings are not to be used for any other purpose without the written permission of BONNIE PLANS by BONNIE inc.

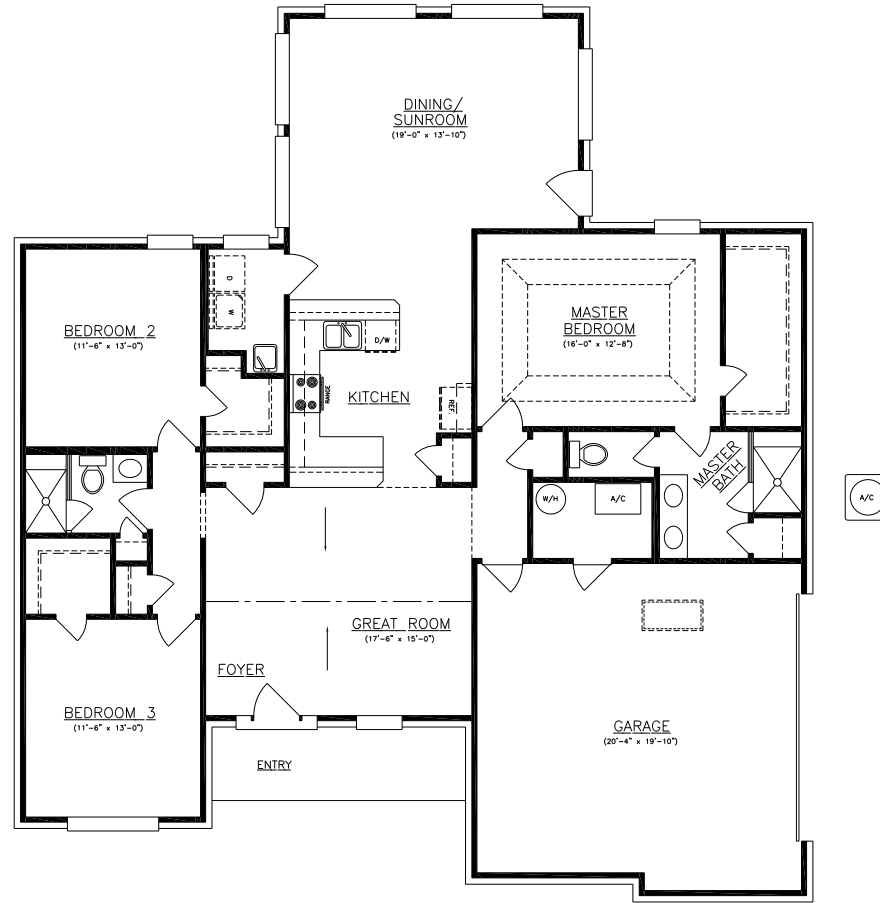
© 2011
 COPYRIGHT
 HOUSE PLANS BY
 BONNIE inc.
 These drawings are not to be construed as a contract. The purchaser/owner is responsible for providing all construction details and materials. The drawings are not to be used for any other purpose without the written permission of BONNIE PLANS by BONNIE inc.



SQUARE FOOTAGE TABULATION

LIVING	1747
GARAGE	506
TOTAL ENCLOSED	2253
ENTRY	76
TOTAL COVERED	2329

1747-1



SQUARE FOOTAGE TABULATION	
LIVING	1747
GARAGE	506
TOTAL ENCLOSED	2253
ENTRY	76
TOTAL COVERED	2329

1747-1

© 2011
 BONNIE INC.
 HOUSE PLANS BY
 BONNIE, INC.
 These drawings are not to
 be construed as contract &
 are form or contract. Material
 shown on these drawings is
 HOUSE PLANS BY BONNIE, INC.

HOUSE PLANS BY BONNIE, INC.
 represents the design of the
 structure shown on these plans.
 It is the responsibility of the
 contractor to verify all
 dimensions and conditions
 shown on these drawings
 before construction.
 BONNIE, INC. does not
 warrant the accuracy of
 these drawings.

HOUSE PLANS by BONNIE inc.
 4745 SWEET CHERRY LANE EAST JACKSONVILLE, FLORIDA 32225
 (904) 264-1262

PLAN # 1747-1

KENNY GREENE

DRAWN BY	
DATE	11-02-12
SCALE	1/4"=1'-0"
CHECKED BY	B.M.S.
PLAN NO.	
SHEET NO.	1 OF 1